



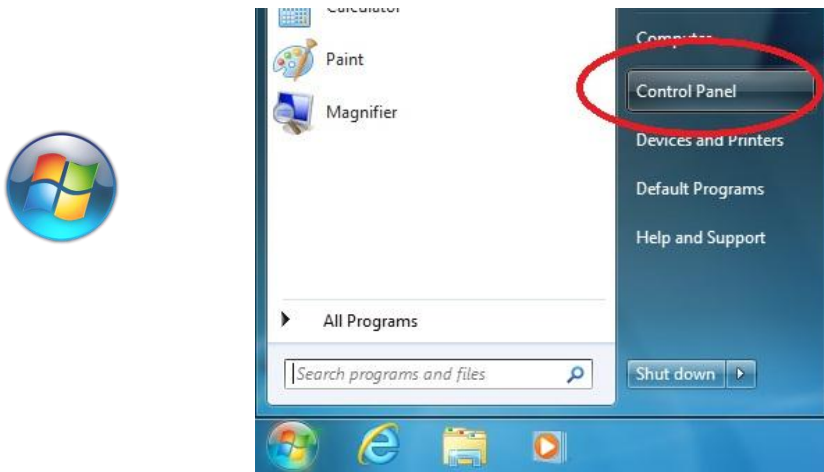
ST. PAUL'S SCHOOL

Secure Wireless Portal Configuration

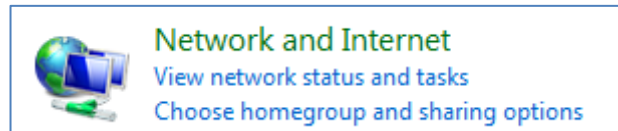
Windows 7 - Faculty, Staff & Student Systems

St. Paul's School has recently updated the campus wireless systems to support secure encrypted wireless connections. This was done to provide a level of network protection to our campus users when they attached to the campus wireless network. It also limits the ability of outsiders to connect to the campus network, lessens opportunities for unauthorized "sniffing" of network traffic, and helps to prevent credential gathering and account compromise. The following instructions will help you attach securely to the campus wireless network. You need only perform these steps once and your computer will retain them.

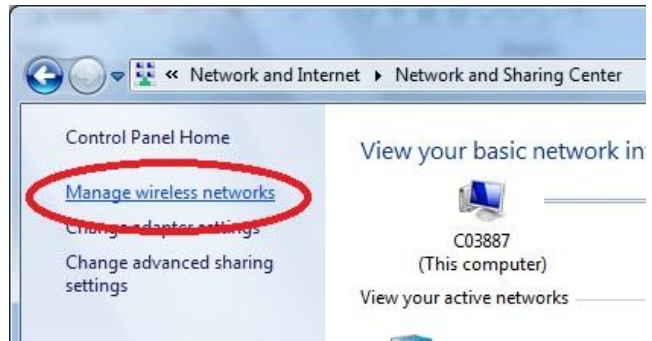
1. Click the Windows Orb and choose Control Panel



2. Within the Network and Internet Category choose **View network status and tasks**

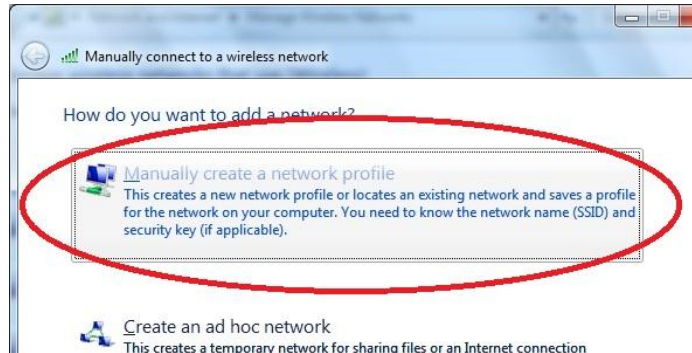


3. In the dialog box that appears you'll want to click the link for **Manage Wireless Networks**.



4. Select **Add** at the top of the wireless networks listing

5. Select **Manually create a network profile** and filling the following fields



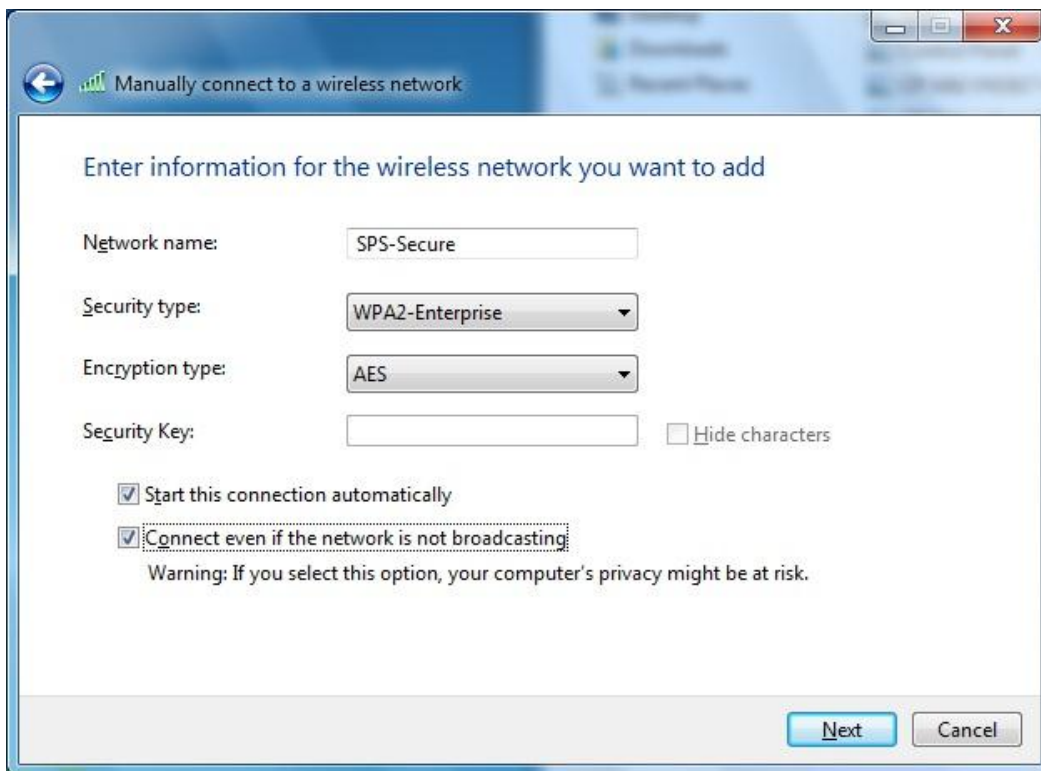
Network Name: **SPS-Secure** (Note: It is case sensitive)

Security type: **WPA2-Enterprise**

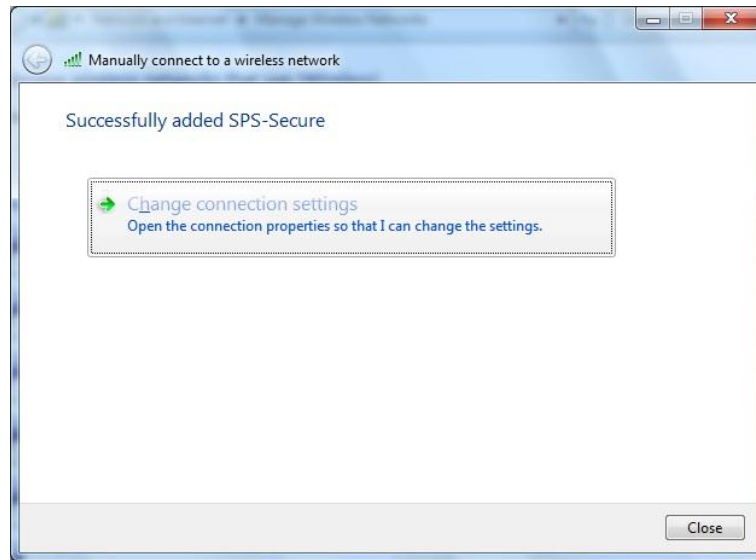
Encryption type: **AES**

Start this connection automatically

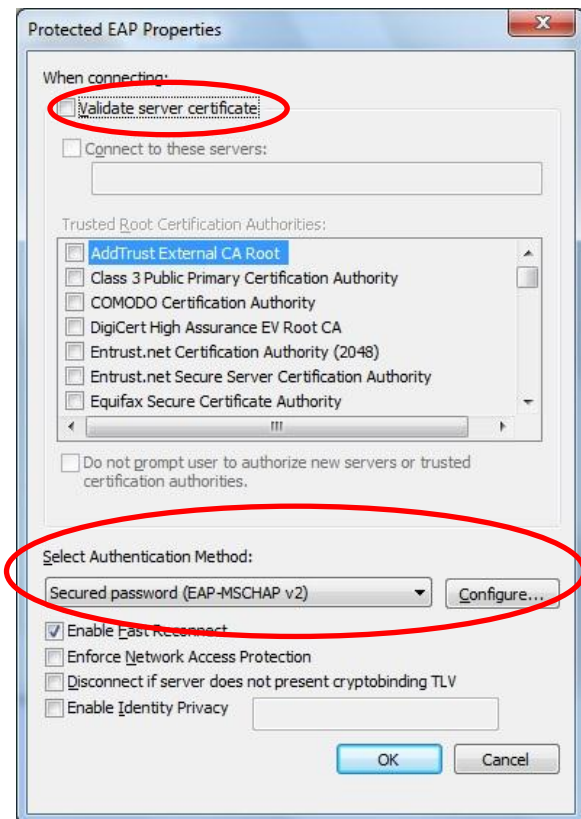
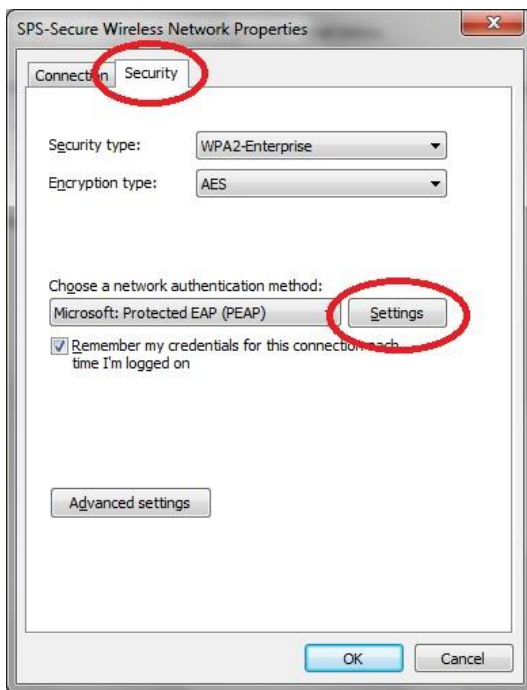
Connect even if the network is not broadcasting



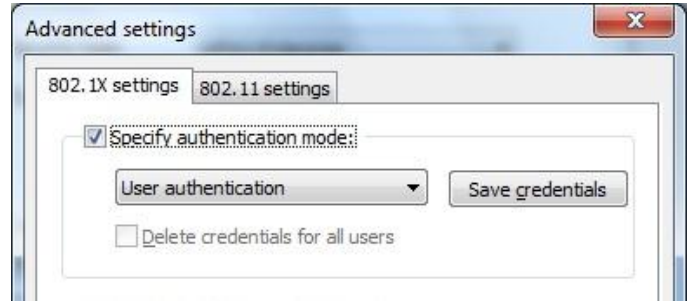
6. Click Next and you'll be notified if you successfully created the wireless profile. In that dialog box you'll need to select **Change Connection Settings**



On the Security Tab select the **Settings** button and **Uncheck the Validate server certificate** and press the **Select Authentication Method** button and choose **Secured password (EAP-MSCHAP v2)** and click the **Configure...** button



7. If this is a school owned computer Automatically use my Windows logon name and password (and domain if any).
If it is NOT a school owned computer Automatically use my Windows logon name and password (and domain if any).
8. Choose **Ok**, then **OK** again.
9. Select Advanced Settings and check **Specify Authentication Mode** and choose USER Authentication from the pop-up.
10. Choose **Ok**, then **OK** again.
11. Choose **Close** and **Close** the Network Connections Window.



That's it you should now be securely connected to the campus wireless network.

If you have questions or difficulty completing these steps you can contact or visit the IT Techshop located in the lower level of Schoolhouse and we will assist in the configuration.

Contact the IT Helpdesk

Email: Helpdesk@sps.edu

Phone: from on campus dial Ext. 2000

Off campus dial 229-5698